

# MONTHLY MEMBERSHIP PROGRESS REPORT

District 325 D

Results as of: 3/31/2025

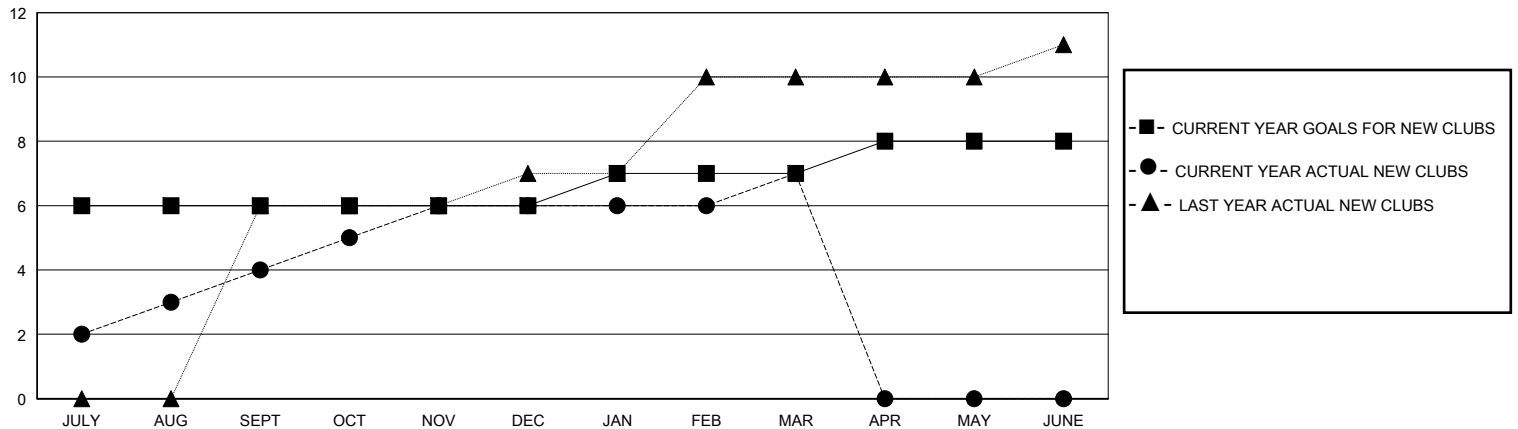
GMT:

LOCATION NEPAL

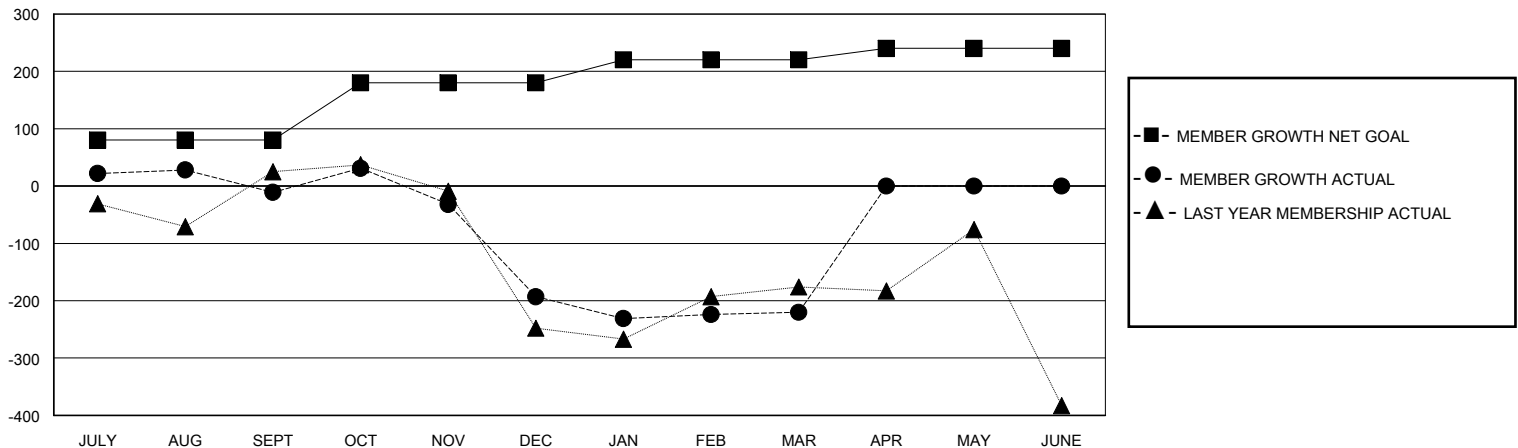
GMT CA

| Clubs                 |               |           |               | Members               |                        |                      |  |
|-----------------------|---------------|-----------|---------------|-----------------------|------------------------|----------------------|--|
| RESULTS FOR 2024-2025 |               |           |               | RESULTS FOR 2024-2025 |                        |                      |  |
| QUARTER               | NEW CLUB GOAL | NEW CLUBS | DROPPED CLUBS | QUARTER               | MEMBER GROWTH NET GOAL | MEMBER GROWTH ACTUAL | DROPPED MEMBERS ACTUAL (including transfers) |
| JULY/AUG/SEPT         | 6             | 4         | 4             | JULY/AUG/SEPT         | 80                     | 140                  | 138  |
| OCT/NOV/DEC           | 0             | 2         | 6             | OCT/NOV/DEC           | 100                    | 114                  | 259  |
| JAN/FEB/MAR           | 1             | 1         | 3             | JAN/FEB/MAR           | 40                     | 84                   | 73   |
| APR/MAY/JUNE          | 1             | 0         | 0             | APR/MAY/JUNE          | 20                     | 0                    | 0  |

GOALS AND ACTUAL NEW CLUBS CUMULATIVE



GOALS AND ACTUAL MEMBERS CUMULATIVE



DROPPED CLUBS: 13

34 CLUBS OF 80 ADDED 1 OR MORE NEW MEMBERS

## GENDER DISTRIBUTION

MALE 1,135 (67.64%)  
FEMALE 542 (32.30%)

## DROPPED MEMBERS

|                |            |
|----------------|------------|
| DECEASED       | 0          |
| CLUB CANCELLED | 262        |
| OTHER          | 207        |
| <b>TOTAL</b>   | <b>469</b> |

[CLICK HERE FOR CUMULATIVE MEMBERSHIP DATA](#)

|                                 |   |
|---------------------------------|---|
| TOTAL FAMILY UNIT MEMBERS       | 0 |
| FAMILY MEMBERS PAYING HALF DUES | 0 |